



SIMPLY HOMES

Belvedere Apartments

Hertford SG14 1AS

Price Guide £250,000



Belvedere Apartments

Hertford SG14 1AS

CHAIN FREE - This charming one bedroom Town Centre Apartment, with Private South Facing Roof Terrace is located centrally in the town of Hertford.

This light and airy property comprises of good-size double bedroom, with built in wardrobes and a 3-piece bathroom en-suite bathroom. The rest of the property comprises of an open plan living room/kitchen which benefits from a large turret bay-window. The private South-facing roof terrace features 'Mary Poppins' style views over the Hertford rooftops and spacious enough for sun loungers, table & chairs, BBQ, etc.

This modern apartment is formed as a part of this delightful conversion in the Hertford town centre, just a stones throw away from Hertford East Station and all the local amenities.

Service charge: £1500 PA

Ground Rent: £160 PA







- Summary -

- Communal Entrance -

Communal Hallway

- Second Floor Apartment -

Entrance Hallway

Utility Cupboard

Living Room

15'5" x 14'11" (4.70 x 4.55)

Kitchen

7'8" x 12'7" (2.34 x 3.84)

Bedroom 1

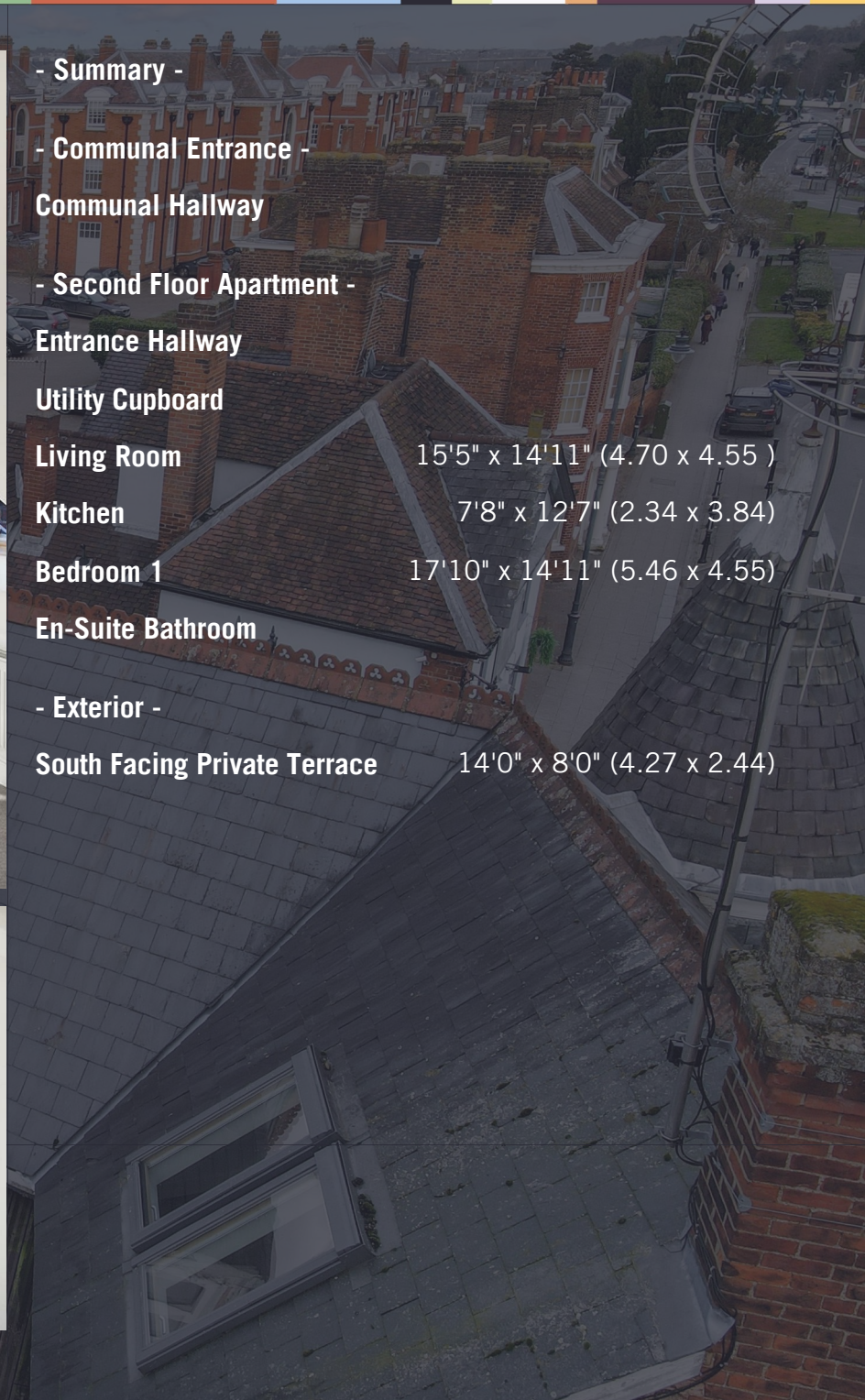
17'10" x 14'11" (5.46 x 4.55)

En-Suite Bathroom

- Exterior -

South Facing Private Terrace

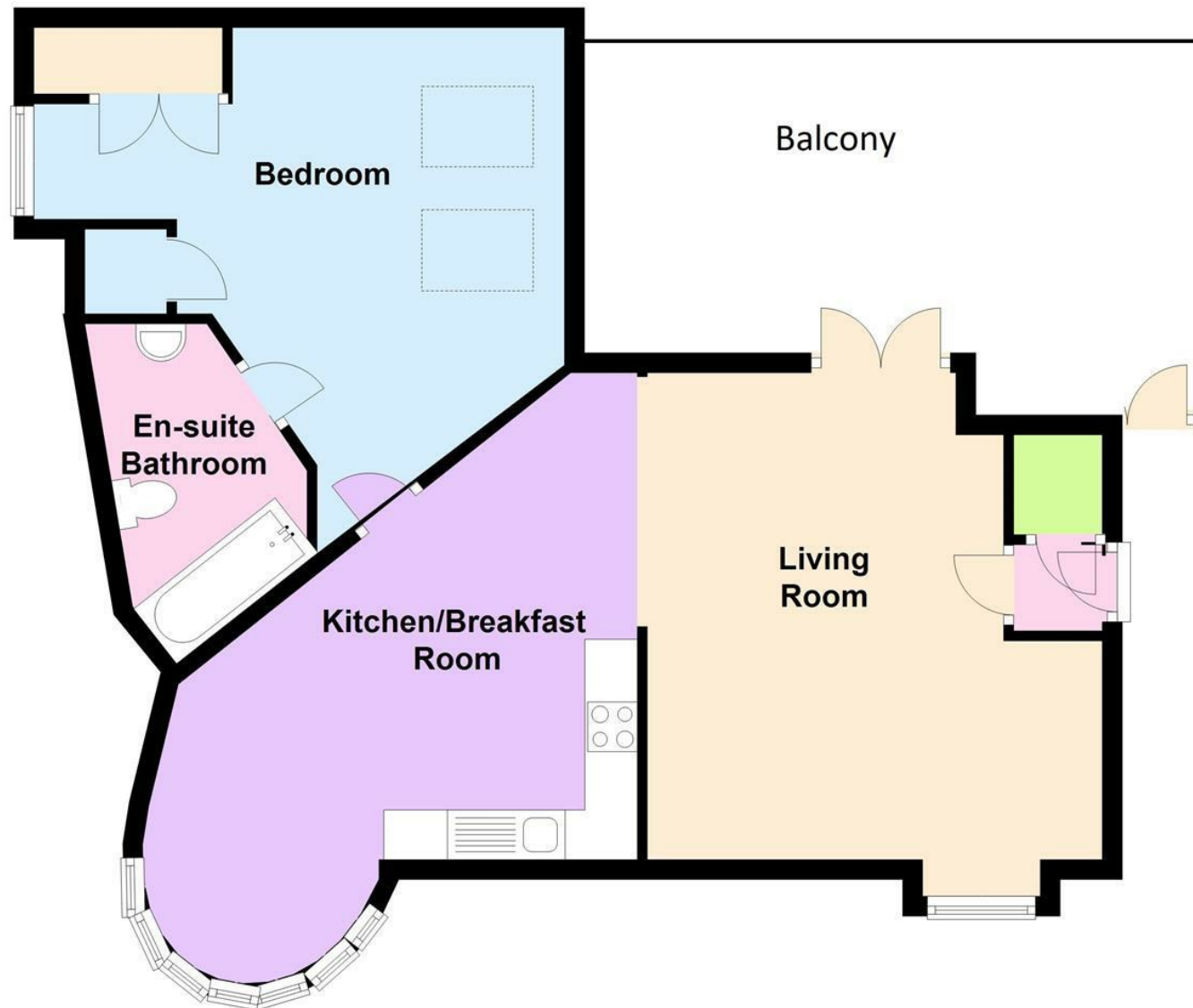
14'0" x 8'0" (4.27 x 2.44)







Second Floor





SIMPLY HOMES

115 Fore Street | Hertford | SG14 1AS | 01992 558 557 | sales@simply-homes.co.uk | simply-homes.co.uk | Find us on

